



CEYOC 2019 Bulletin 2

Central European Youth Orienteering Cup

Date and place

5-7. April 2019, Háj ve Slezsku, Czech Republic (15 km west from Ostrava)

Program

Fri 5 April	16:00:	Sprint	Lower Vítkovice area, Ostrava
	19:00:	Dinner	
Sat 6 April	7:00	Breakfast	
	10:00	Long	Ostrá hůrka
	13:30	Lunch	
	18:00	Dinner	
Sun 7 April	7:00	Breakfast	
	9:30	Relay	Smolkov
	12:00	Lunch (packages)	

All meals will be served in [Hotel pod Hůrkou](#), Antonína Vaška 8, 747 92 Háj ve Slezsku [\[map\]](#).

Sprint event centre is [café Maryčka + 2nd floor](#), Cineport, Moravská Ostrava 3369, 702 00 Ostrava [\[map\]](#).

Long centre is Ostrá hůrka, Háj ve Slezsku, 49.8914025N, 18.0921267E [\[map\]](#).

Relay centre is meadow in direction of pod Vesníkem, Smolkov, 49.8981342N, 18.0683514E [\[map\]](#).

Organiser

[OOB TJ Baník Ostrava](#)

email: ob.aov@seznam.cz

Event Director Miroslav Hrubý

Event Secretary Oldřich Vlach

Main Referee Monika Krejčíková

CEYOC Delegate Dušan Vystavěl

Courses Ondřej Vystavěl (sprint), Jiří Vlach (long and relay)

Maps Zdeněk Janů, Bohumil Háj, Martin Telecký, Miroslav Sikora

Sponsors

Moravian - Silesian region



municipality of Háj ve Slezsku



Ataco



Overview map

Click on the map below for more details.



Competitions

Sprint, Friday 5 April 2019



Map: 1:4000, E 2 m

Map maker: Zdeněk Janů

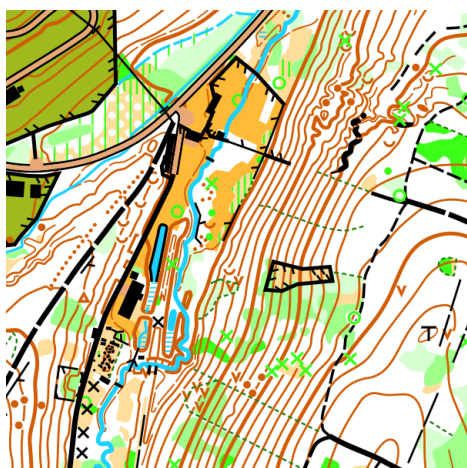
Last map: **Hlubina 40** (2016)

Terrain description: The Lower Vítkovice area (DOV) is revitalized former ironworks and coal mining complex in the heart of Ostrava city centre. It preserves state of ironworks from 60s and serves as museum, as an iq park and entertaining complex. Flat terrain with lots of paved areas.

Course setting: Ondřej Vystavěl

W16	1.8 km
W18	2.0 km
M16	2.1 km
M18	2.3 km

Long, Saturday 6 April 2019



Map: 1:10 000, E 5 m

Map makers: Martin Telecký, Miroslav Sikora, Bohumil Háj

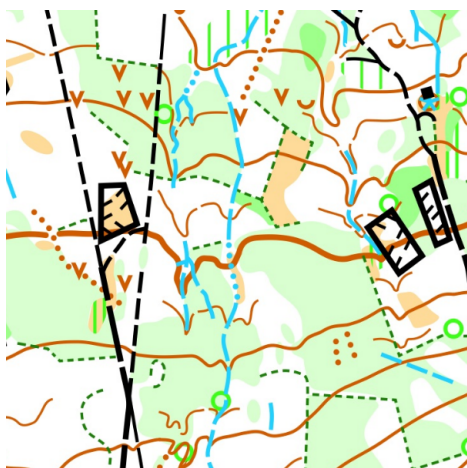
Last map: **Ostrá hůrka** (1994)

Terrain description: Moderately steep terrain with predominantly good runability. There are terrain remnants of World War II battles, pits and trenches including ruins of fortified defensive lines, deep valleys. Vegetation is half deciduous, half conifer. The greater part of the map is of good runability and visibility. There are some roads and paths of all categories.

Course setting: Jiří Vlach

W16	4.9 km	215 m	15
W18	6.2 km	275 m	16
M16	6.5 km	315 m	16
M18	8.4 km	375 m	19

Relay, Sunday 7 April 2019



Map: 1:10 000, E 5 m

Map makers: Bohumil Háj, Martin Telecký

Last map: **Lhota** (1993)

Terrain description: Mostly the same character as for long distance. The difference makes smaller elevation, the presence of areas with seasonal water channels, and more detailed boundary between different vegetation types.

Course setting: Jiří Vlach

W16	4.1 km	120 m	17
W18	4.8 km	180 m	18
M16	4.7 km	200 m	21
M18	6.7 km	280 m	27

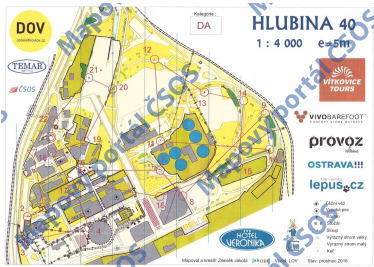
Punching system

SPORTident Air+ punching system will be used for all races. SI cards may be rented from the organiser for 5 EUR for the whole weekend (per person).

Please note that it is still possible to use your classic SPORTident chip.

Old orienteering maps

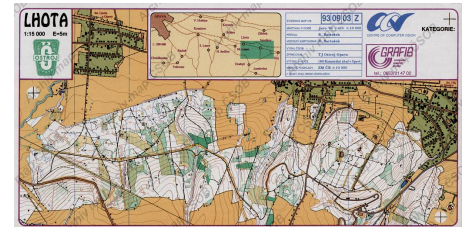
Hlubina 40 (2016)



Ostrá hůrka (1994)



Lhota (1993)



Accommodation and meals

We will provide hard floor accommodation in the ground [school](#) in Háj ve Slezsku for two nights (Fri, Sat) [[map](#)].

All meals will be served in the [Hotel pod Hůrkou](#) in times according to Program [[map](#)].

Trainings

See separate bulletin.